



78 Swadlincote Road

, Woodville, DE11 8DB

Offers in the region of £175,000



Dwellings Estate Agents is offering this well-presented three-bedroom mid-terraced home offers generous living space and a convenient location in the heart of Woodville, making it an ideal choice for families, first-time buyers or investors alike.

Inside, the property boasts two large reception rooms, providing plenty of flexibility for both living and dining. The fitted kitchen leads to a useful guest WC, while upstairs, the three bedrooms include a master bedroom with its own modern en-suite shower room. The layout ensures comfort and practicality, with ample space for family life.

Set in a popular residential area, the home is within easy reach of local shops, schools and transport links, while being just a short distance from Swadlincote town centre and surrounding amenities.

With its blend of character, space and modern conveniences, this mid-terraced home represents an excellent opportunity to step onto the property ladder or expand an investment portfolio.

Viewings are a must to appreciate this home.

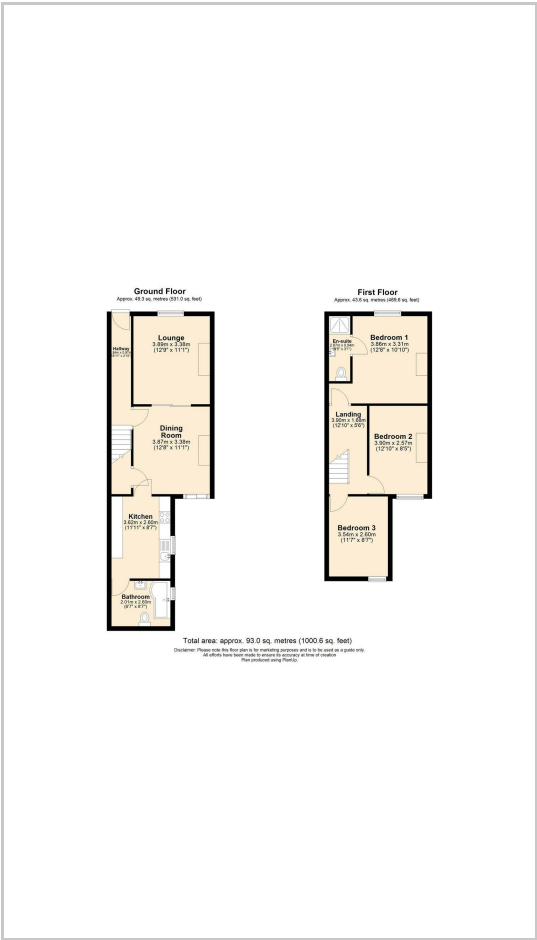


- LOUNGE 12'11" x 11'1" (3.96m x 3.4m)
- DINING ROOM 12'9" x 11'1" (3.91m x 3.4m)
- KITCHEN 11'10" x 8'11" (3.63m x 2.74m)
- MASTER BEDROOM 14'0" x 12'11" (4.29m x 3.94m)
- BEDROOM TWO 12'11" x 9'3" (3.94m x 2.84m)
- BEDROOM THREE 11'10" x 8'11" (3.63m x 2.74m)

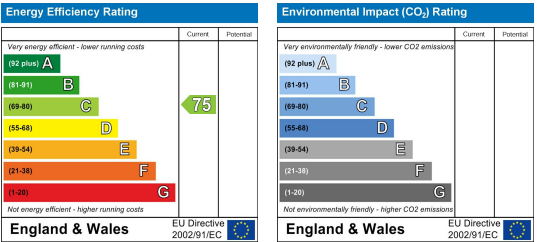
Area Map



Floor Plans



Energy Efficiency Graph



These particulars, whilst believed to be accurate are set out as a general outline only for guidance and do not constitute any part of an offer or contract. Intending purchasers should not rely on them as statements of representation of fact, but must satisfy themselves by inspection or otherwise as to their accuracy. No person in this firms employment has the authority to make or give any representation or warranty in respect of the property.